

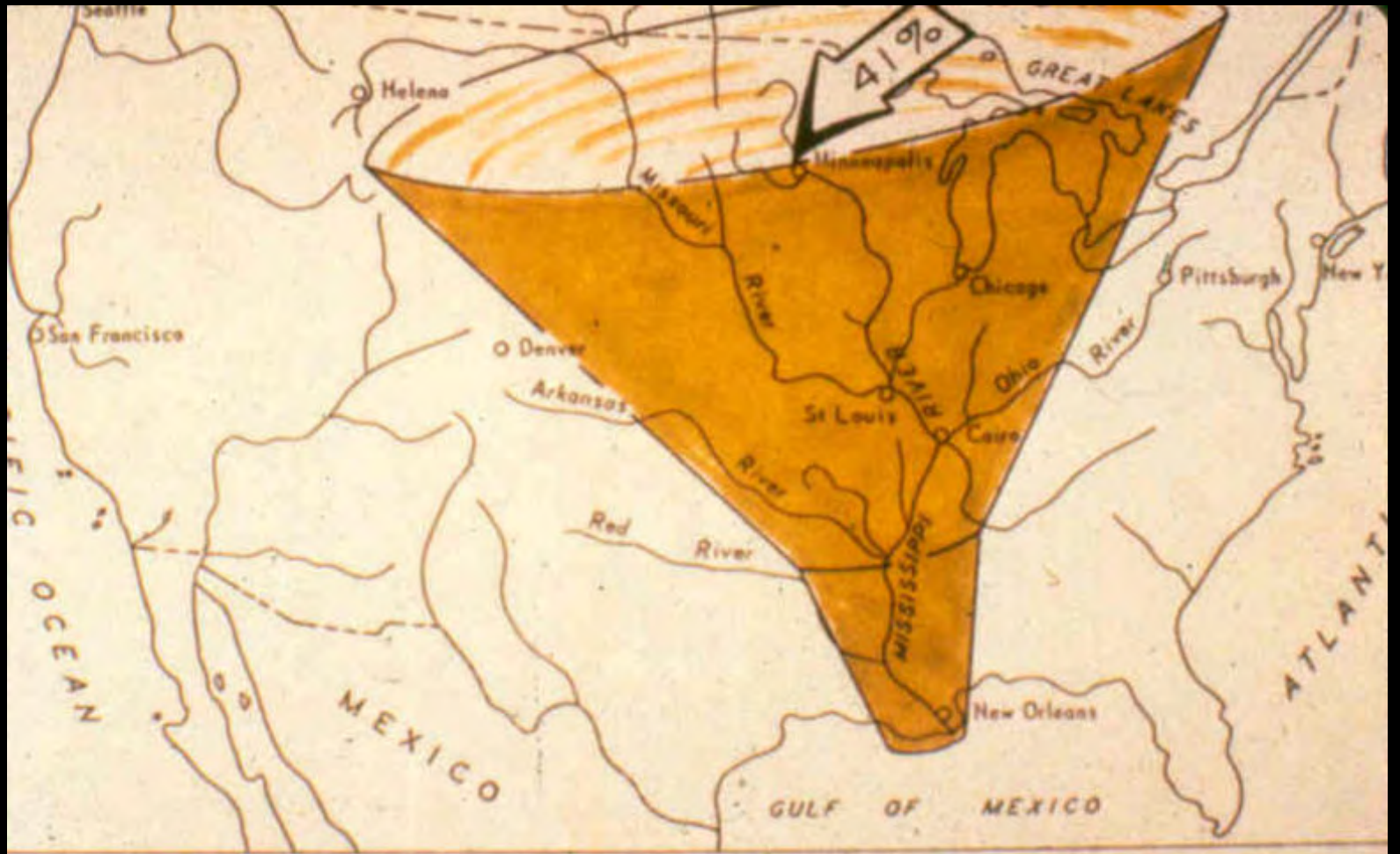






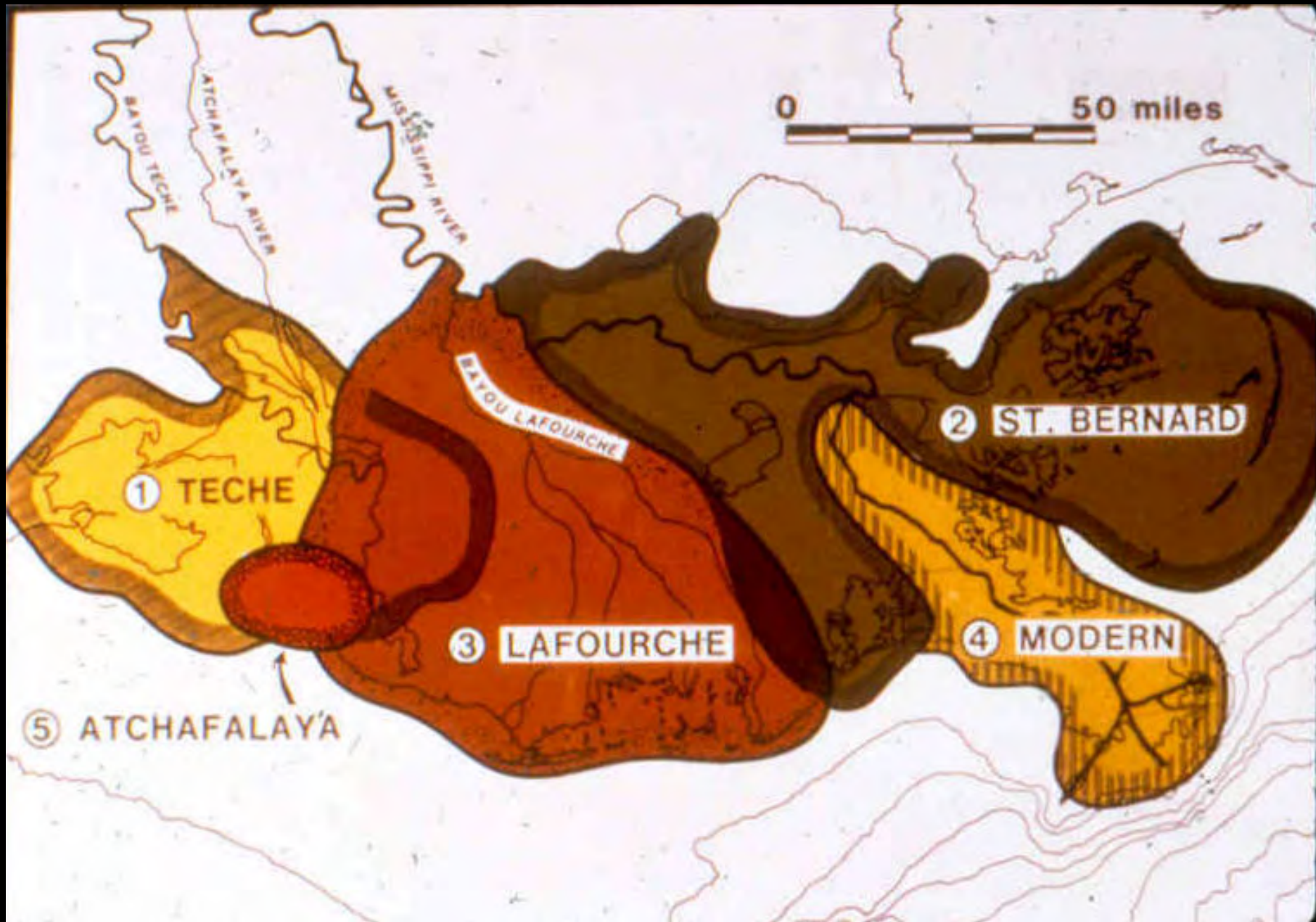
Baton Rouge

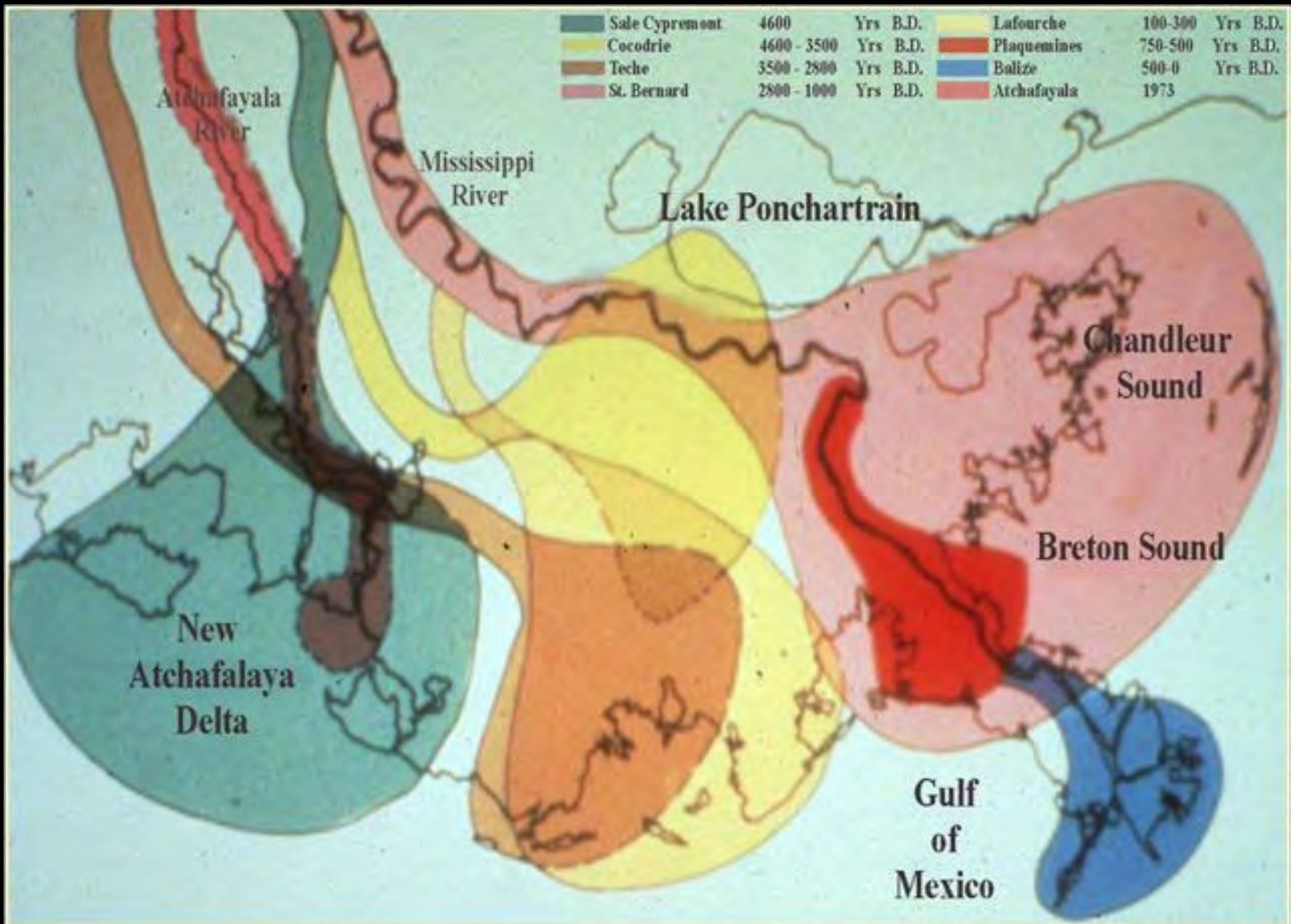
New Orleans

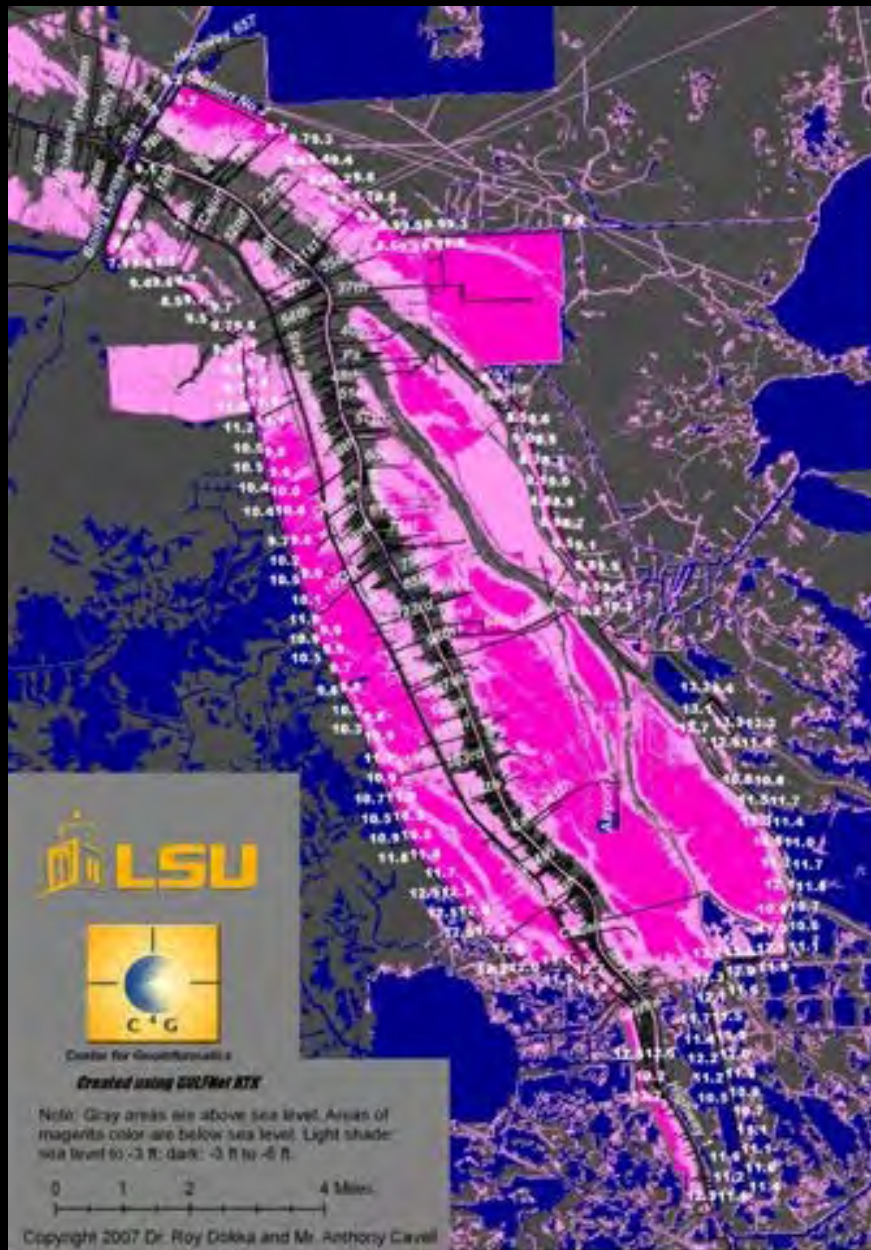


The Mississippi River carries water from 41 percent of the 48 contiguous





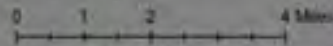




Center for Geospatial Science

Created using GULFNET RTK

Note: Gray areas are above sea level. Areas of magenta color are below sea level. Light shade: sea level to -3 ft; dark: -3 ft to -6 ft.



Copyright 2007 Dr. Roy Dokka and Mr. Anthony Cavill

Hurricane Katrina



Hurricane Katrina



Hurricane Rita



Hurricane Rita







2005 9 24







Image NASA
Image © 2007 DigitalGlobe
Image © 2007 TerraMetrics

© 2005 Google

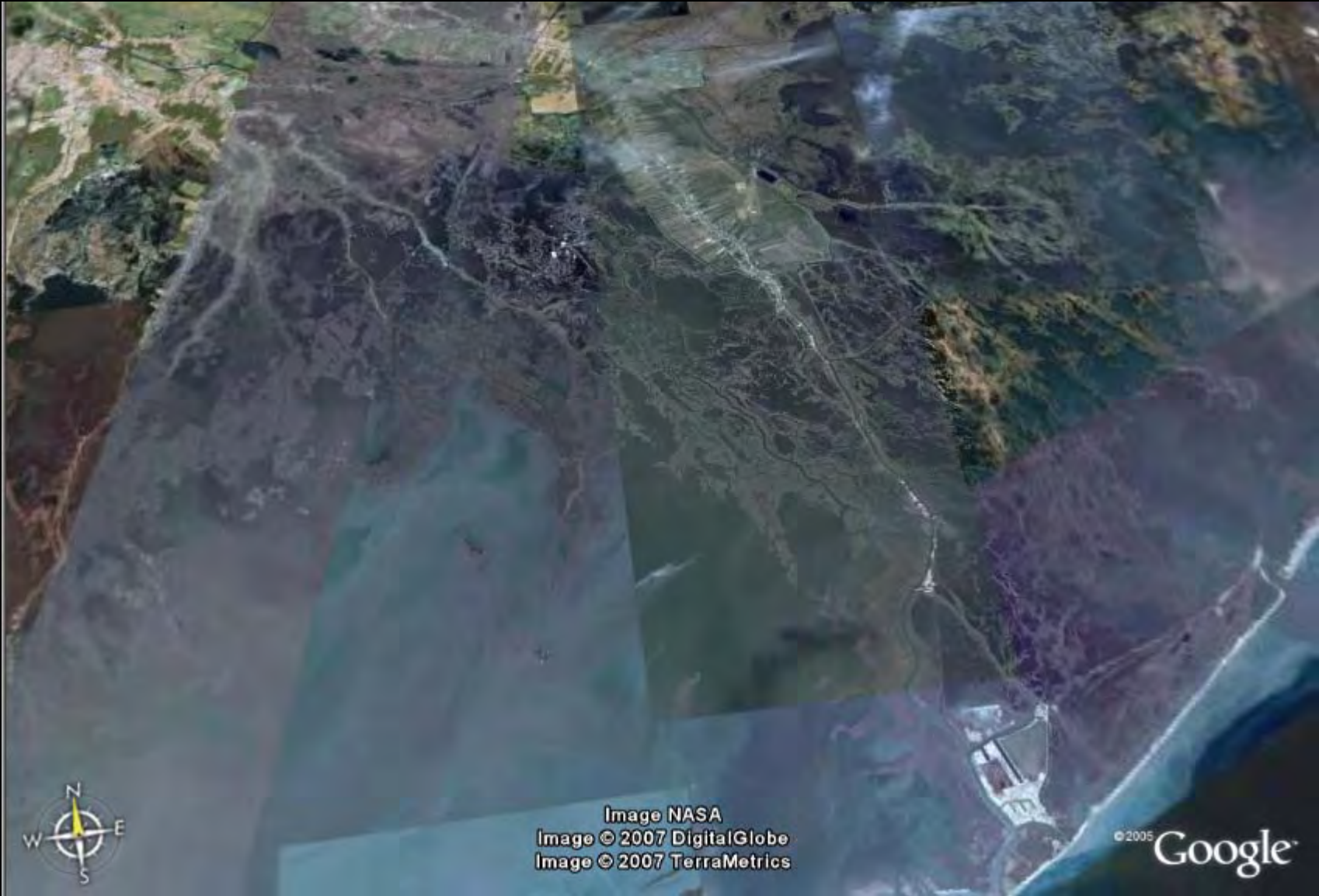


Image NASA
Image © 2007 DigitalGlobe
Image © 2007 TerraMetrics

© 2005 Google





08/13/2006





Mississippi

Baton Rouge

New Orleans

Marsh Island

Cat Island

Horn Island

Dauphin Island



Image NASA
Image © 2007 TerraMetrics
Image © 2007 DigitalGlobe
© 2007 Europa Technologies

© 2005 Google

**SOUTH
LAFOURCHE
LEVEE
DISTRICT**

**SOUTH
LAFOURCHE
LE
DISTRICT**

2008 2 28



Sometimes fishermen stretch the truth about the size of their catch...



...but not in Louisiana!